

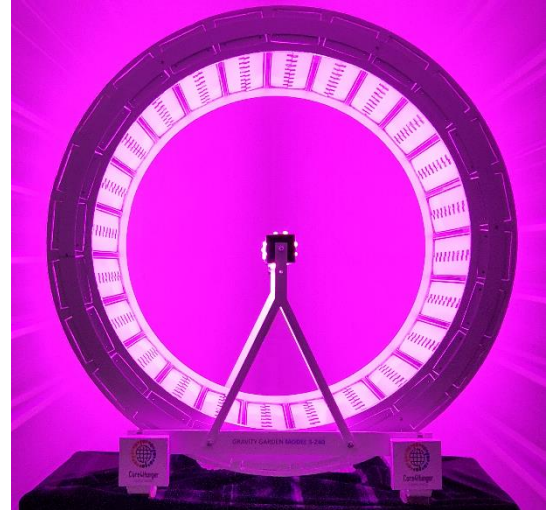


RESEARCH CENTERS

Gravitational Agriculture & Sciences

Cure4Hunger Research Centers are now available to universities, farmers and laboratories to participate and contribute future advancements of science based Gravitational Agriculture. These new Gravity Gardens are able to grow more crops per square foot in recorded history, able to grow 20,000+ fruits, vegetables, herbs, spices, flowers, plants, bushes and trees. Each system has cameras inside for end user and supply chain transparency.

Grow up to 24 different versions of the same crop per harvest creating new brands and or next generation versions for the supply chains. Gravitational Agricultural curriculums will be written in the years and decades to follow.



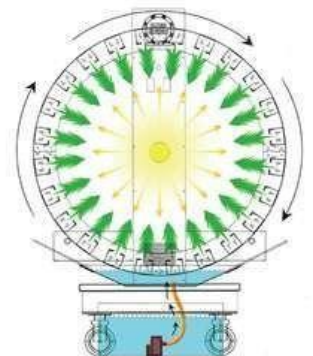
Advantages

- Gravity injected crops accelerates growth and maintains good health
- Lumens Principle (32X to 64X lighting than indoor vertical farming)
- Lowest cost of overhead to grow, harvest and repeat
- Up to 1,320,000 crops in only 2/3 acre (30,000 square-feet / 4 level Dome)
- Cleanest method to grow crops inside clean to hermetically sealed facilities
- Climate controlled and replicated weather cycles for exotic / specific crops
- Nutrients injected directly into the roots
- Transparency provides supply chains and consumers time-lapsed videos (seed to harvest)
- Outdoor farmland is wrapped into wheel circumference maximizing footprint

Revenue Model:

Research Centers earn 100% of profits:

1. Monetize Gravity Gardens with new discoveries, methods, protocols, advancements for industries via pharmaceuticals, nutraceuticals, cosmetics and others plus commissions on all mobile systems & domes.
2. Cure4Hunger Domes JV licensing ranges from \$1,325,000 to \$15,500,000 equipped with 350 up to 4,400 Gravity Gardens inside 3,000 to 30,000 square-foot domes up to 82 feet high.
3. Earn revenues as a specialized laboratory for all veg/ag industries.



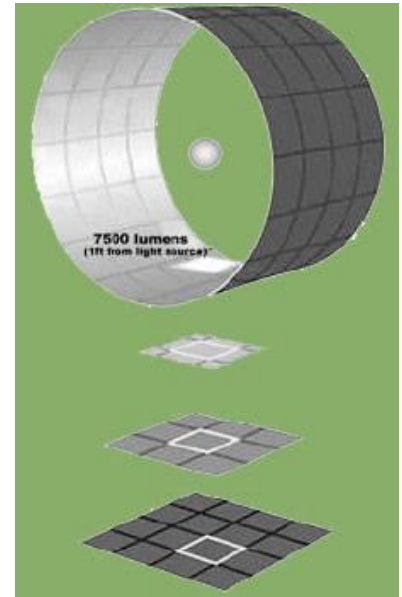
GRAVITATIONAL AGRICULTURE & SCIENCES CURRICULUM 2025

The Science of Gravity Gardens via Education:

Cure4Hunger is allocating 5% of manufactured systems to universities and labs by signing-up for a complimentary Gravity Garden 2-Year Research Center License in exchange for publishing data in annual curriculums.

Cure4Hunger Advantage:

Lumens Principle Light Source and Crops-Growth Relationship uses the precise lighting distance to the crops for maximum health and strength. The scientific method principles are the same as the "inverse square law" – any physical law stating the specified physical quantity strength is inversely proportional to the distance of the crops rotating inside Gravity Gardens. Adding gravitational rotation produces an exponential result combining perfect amount of light, gravity, and nutrients creating the most natural and 100%, clean, clear and consumable crops with highest yields per square feet.



No matter how dry, windy, wet, hot or cold the outside temperature is, Cure4Hunger keeps crops safe and secure inside for people to live sustainable lives. Cure4Hunger Domes are designed to last centuries and significantly more energy efficient maintaining the optimal environment (temperature, humidity, customizable climate cycles) more effectively and affordable than any other indoor farm.

Source Compound	Element(s)
Ammonium phosphate	Nitrogen and Phosphorus
Ammonium sulphate	Nitrogen and Sulphur
Calcium Nitrate Potassium	Nitrogen and Calcium
Nitrate Sodium Nitrate Potassium Sulphate	Nitrogen and Potassium
Superphosphate Calcium Sulphate	Nitrogen Potassium and Sulphur
Magnesium Sulphate Ferrous	Phosphorus and Calcium Sulphur Magnesium & Sulphur Iron
Sulphate Manganese	Manganese
Chloride Zinc Sulphate	Zinc Copper Boric
Copper Sulphate Boric acid powder	

The 3-key elements of nitrogen (N), phosphorus (P), and potassium (K) are essential to crops growth.

Element	Function
Nitrogen	Necessary to produce leaves and stem growth; Also an essential ingredient in building plant cells.
Phosphorus	Required in the development of flowers and fruits and aids in the growth of healthy roots.
Potassium	Used by plant cells during the assimilation of the energy produced by photosynthesis

CURE4HUNGER RESEARCH CENTERS LICENSING


Gravity Gardens	Quantity (10 maximum)	Price	Shipping	Total
Model 3-240		\$5,250	TBD	
Model 5-300		\$5,750	TBD	
Custom Root Trays/Lids		\$2,500	TBD	
2-Years Live Streaming	1	N/C	N/A	
2-Year License	1	\$5,000	N/A	\$5,000
Subtotals				
Due after 2-Year License: Equipment Buyout				\$1.00
Total:				

Cure4Hunger Research Centers are available based on live streaming Gravity Gardens online for the two-year license in addition to publishing data for the 2025 & 2026 Gravitational Agriculture & Sciences Curriculums (excluding intellectual revenue projects). Once two-year license has completed, equipment ownership is transferred to the research center. All revenues are owned by individual research centers. Maximum number of systems available for this program are ten (10) Gravity Gardens.

Cure4Hunger Contracts & Testing Centers are available via joint venture in 180 countries and island nations.

Cure4Hunger Gravity Garden

MODEL 3-240
WESTLAKE VILLAGE, CA



60 Radishes

60 Spinach

60 Baby Romaines

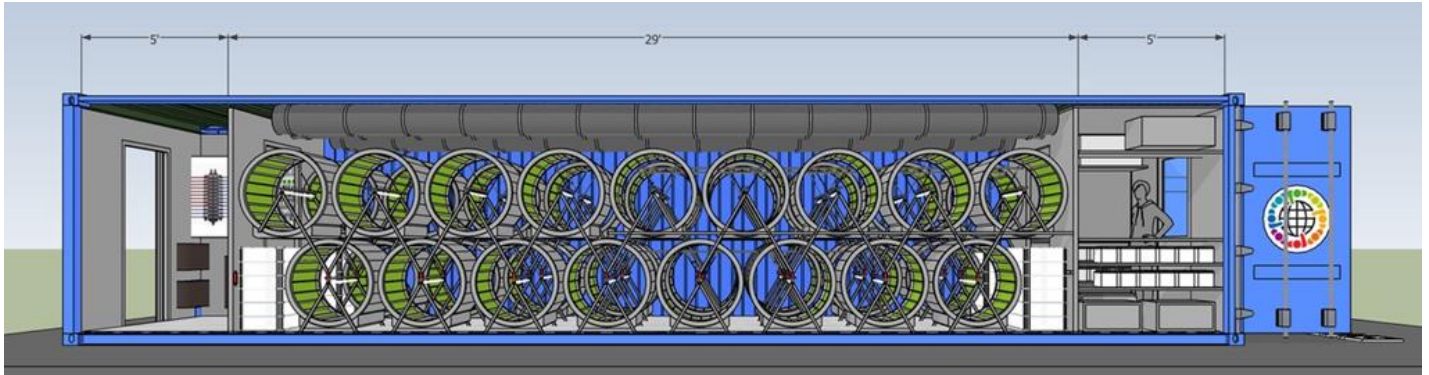
60 Rainbow Chard



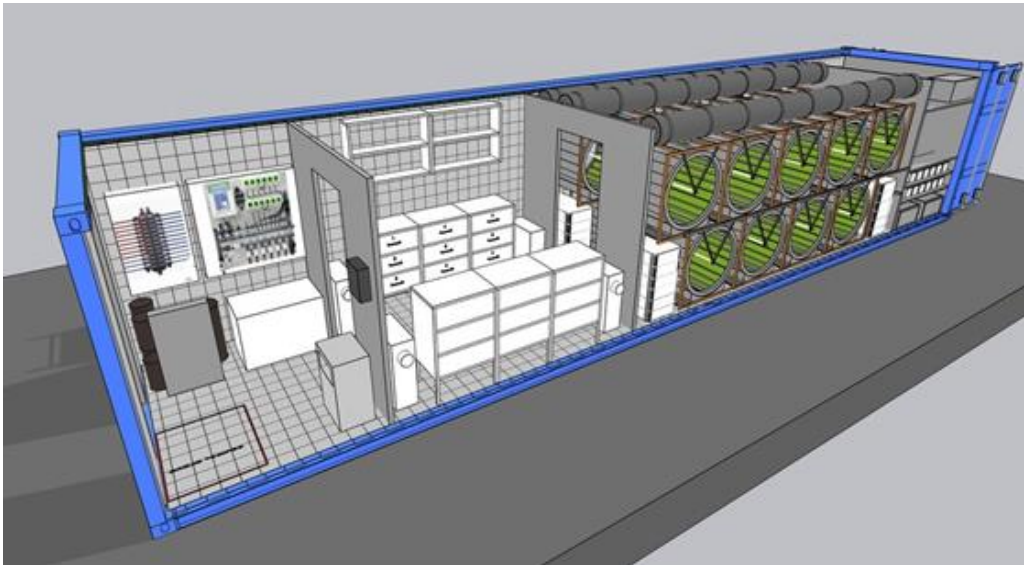
Cure4Hunger
a Cure4Life initiative

CURE4HUNGER MOBILE RESEARCH CENTERS

Integrating Gravity Gardens into laboratories and research centers via 20-foot and 40-foot shipping containers can be deployed globally. Designed for achieving agriculture advancements for crops, plants, flowers. Bushes, fodder and trees. All mobile systems come with 10-year warranty & 24/7/365 support providing sustainable ag/veg advancements at the local level.



Model 7344 with airlock chamber equipped with 34 Gravity Gardens



Model 3888-LAB
All-in-one mobile research laboratory grows 3,888 crops and 432 individual tests simultaneously. Built for any application and or size of ag/veg project.

C4H Mobile Model #	Gravity Gardens	Midsize Ag/Vegs	Smaller Ag/Veg	Research Trays	Price USD
2592	12	2,592	7,776	288	\$220,000
3888-LAB	18	3,888	11,664	432	\$277,000
7344	34	7,344	22,032	816	\$323,000
8208	38	8,208	24,624	912	\$353,000
Hibernation Chamber	38	8208	24,624	912	\$129,000
20-Foot Demo System	12	2,592	7776	2888	\$243,000

ADDITIONAL MODELS AND FINANCING AVAILABLE

CURE4HUNGER DOMES

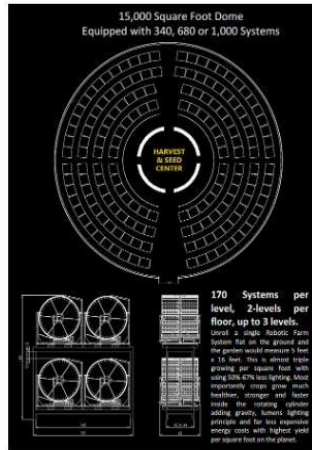


Once a Cure4Hunger Food and Water Dome is built, it produces 100% organic food for decades. No matter how dry, windy, wet, hot or cold outside, Cure4Hunger Food and Water Domes keep food safe and secure inside disaster proof domes.

Cure4Hunger is chartered to build 15,000 Food and Water Domes in 150 nations providing fruits, vegetables and fish in these domes. One hundred percent of all fresh water is provided by water atmospheric generators, which harvest 1,320 to 5,000 gallons of fresh drinking water 365 days a year.

Four compact Cure4Hunger Gravity Gardens Systems (10x10x15 feet) are equivalent to growing seven acres of outdoor farmland or 15 acres when poor harvest sections of flooded land or land near walk way or roads where crops receive high amounts of dust are added. Each robotic cylinder system produces more 100% organic crops per square foot in recorded history.

Construction of a Cure4Hunger Dome takes less than 30 days due to ease of design and is half the cost of a traditional building being 50-75% more energy efficient. The grow domes maintain the best environment (temperature and humidity) more effective and affordable than any other indoor farm. Within 15-20 years the energy



Cure4Hunger Simulated Domes
Fruits, Vegetables, Herbs, Spices, Fish, Fodder

CURE4HUNGER JOINT VENTURE DOMES COSTS & SIZES

Cure4Hunger has five dome sizes includes C4H Water&Power Stations licenses with Gravity Gardens 6-foot wide (double-wide). Number of crops per tray is based on size of crops with yields are determined based on percentages of accelerated harvests produces annual yields. Building long-term sustainability at local level provides self-reliance near distribution centers, food and other processing facilities around the world.

Cure4Hunger Domes (Square Feet) 12-Foot Stem Walls	Gravity Gardens (5-foot Radius) 30 Trays 300 Crops	Gravity Gardens (3-foot Radius) 24 Trays 240 Crops	Joint Venture Cost USD
Contracts & Testing Center	50	50	\$575,000
5,500	250	250	\$2,350,000
10,000	1,000	1,000	\$5,950,000
15,000	1,500	1,500	\$9,250,000
30,000	2,100	2,100	\$13,500,000
30,000 XL	2,100	2,100	\$15,500,000